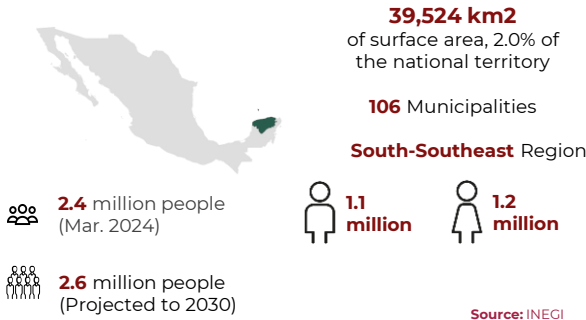




Yucatán

August 2024



1.2 million

Economically Active Population (EAP) (Mar. 2024)



30 years

Average age of population (Dec. 2020)



9.9

Average of schooling (2022-2023)



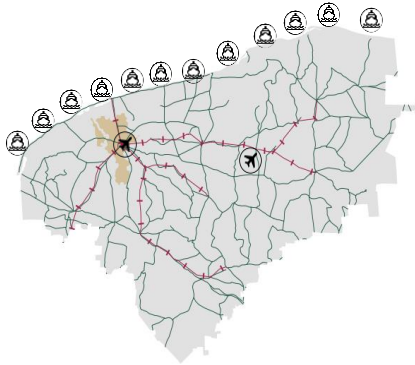
1.6% with respect to the EAP

Unemployment rate (Mar. 2024)

Source: INEGI-SEP



Infrastructure and resources



11 Industrial Parks (2023)

Highways **12,344 km** in length (2022)

Railroads **641 km** in length (2021)
Concessionaries: Tren Maya

2 International airport (2022)
Passenger capacity: **1,619,804**
Load capacity: **19,890,702 kg**

2 Ports (2021)

Nearby ASIPONA (2022): **Puerto Progreso**



Gas pipeline infrastructure (2023): **Yes, Private**



Water resources (2019):
Number of aquifers: **1**
Availability: **High**



Households with internet access(2022): **65.9 %**



Types of customs: **Maritime**

Distance to the 3 main customs border roads (km) (2022):

Nuevo Laredo: **2,248.9**

Ciudad Juárez: **3,226.3**

Tijuana: **4,347.2**

Source: SICT-INEGI



Mexican talent in higher education

8,209
Graduates (2022-2023)



28
Institutions

2,582
STEM fields graduates



1,701
Engineering, manufacturing and construction



532
Information and communication technologies



349
Natural sciences, mathematics and statistics

Main institutions

with the highest number of STEM graduates



Universidad Autónoma de Yucatán

717



Universidad Tecnológica Metropolitana

448



Instituto Tecnológico de Mérida

444

Engineering, manufacturing and construction graduates and postgraduates:



Architecture and construction

294



Mechanical, electrical, electronic engineering, chemical and related professions

1,337



Manufacturing and processes

70

Source: ANUIES (2022-2023 school year)



Yucatán

August 2024



MSMEs



130,605
enterprises

- Micro **121,796**
- Small **7,585**
- Medium-sized **1,224**

Vocations aligned to industrial policy



Iron works products manufacturing



Fishing



Machinery and equipment repair and maintenance



Potential sectors



Health care and social assistance services



Transportation, postal services and warehousing



Mining

Source: Data MX



Foreign trade



1,281

M USD

International purchases



1,073

M USD

International sales

Main export sectors



196
M USD

Edible meat and offals



173
M USD

Mechanical machinery and appliances, and parts



136
M USD

Fine or cultured pearls; precious metals and stones; costume jewelry

Source: SE. Merchandise Trade Balance of Mexico (Jun. 2024)



Main indicators

Source: INEGI - DENUE (Mar. 2024)

21 GDP position

\$ 19 B USD at market prices (Dec. 2022)



3.9 %

Economic activity growth (Mar. 2024)

\$ 8,019

USD of GDP per capita (Dec. 2022)



6

Position by economic growth (Mar. 2024)

1.5 %

National GDP (Dec. 2022)

Source: INEGI



Foreign Direct Investment

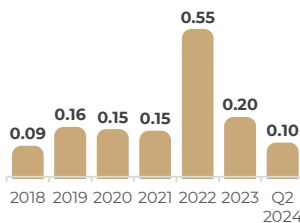
Top 3 by investment origin country second quarter of 2024

- 1 U.S.A. 0.53 B U S D
- 2 China 0.36 B U S D
- 3 Spain 0.18 B U S D

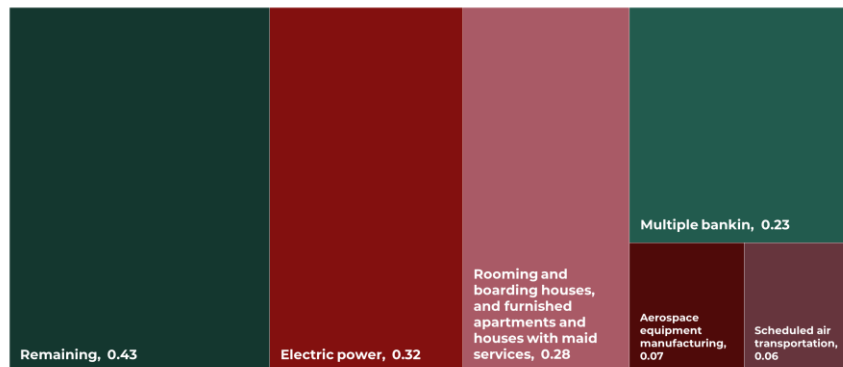
Historic FDI (2018-Q2 2024)

1.39
(B USD)

Billion dollars



FDI by sector (Billion dollars)



Source: SE (Jun. 2023)