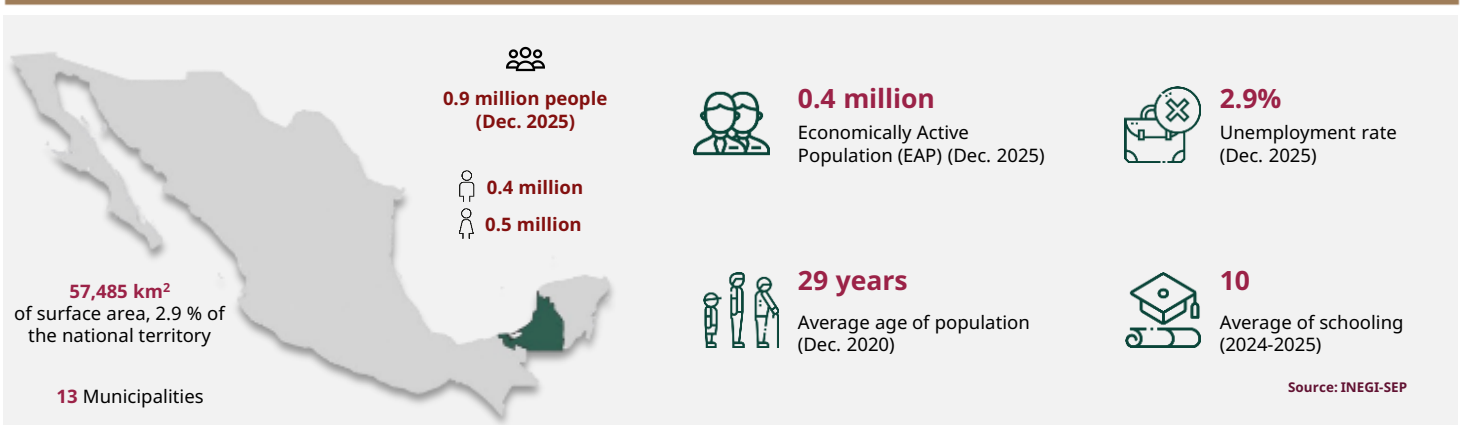


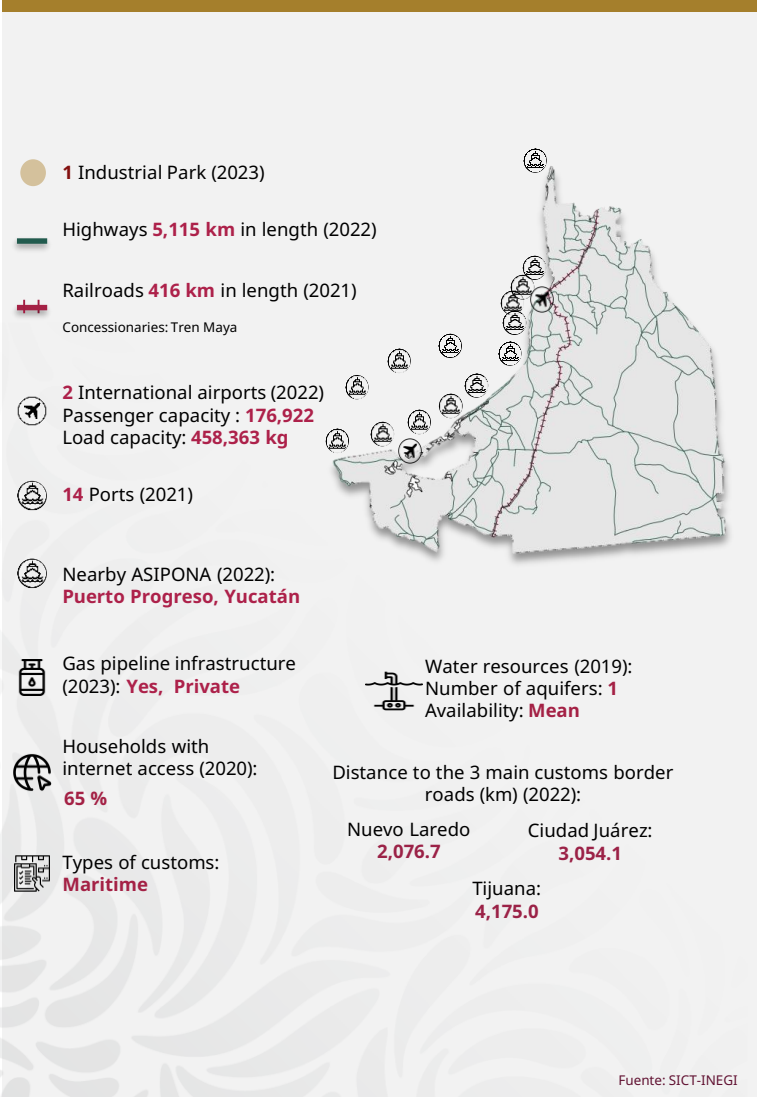


Campeche

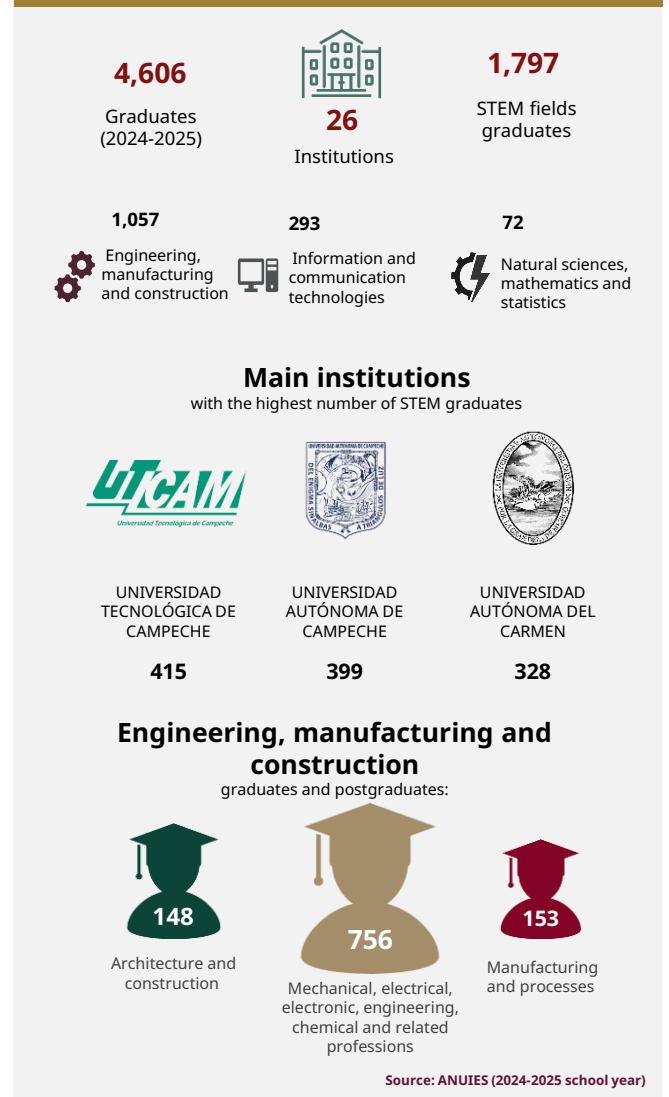
March 2026



INFRASTRUCTURE AND RESOURCES



MEXICAN TALENT IN HIGHER EDUCATION





Campeche

March 2026

MSMEs



47,334
enterprises

- Micro **44,237**
- Small **2,710**
- Medium-sized **387**

Source: INEGI - DENU (Mar. 2026)

POTENTIAL SECTORS



Paper industry



Artistic, cultural and sporting services



Services related to mining

Source: Data MX

FOREIGN TRADE



81

M USD

International purchases



143

M USD

International sales

Main export sectors



67

M USD

Knitted garments and clothing accessories



15

M USD

Garments and clothing accessories, not knitted



11

M USD

Mechanical machinery and appliances, and parts

Source: Mexico's Trade Balance (Dec. 2025)

MAIN INDICATORS



18

GDP position

\$ 29 B USD at market prices(2023)



\$ 30,380

USD of GDP per capita (Dec. 2023)



1.9%

National GDP (2023)



-14.3 %

Economic activity growth (2024)



31

Position by economic growth (2024)

Source: INEGI

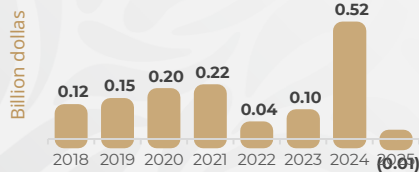
FOREIGN DIRECT INVESTMENT

Historic FDI (2018 - 2025)

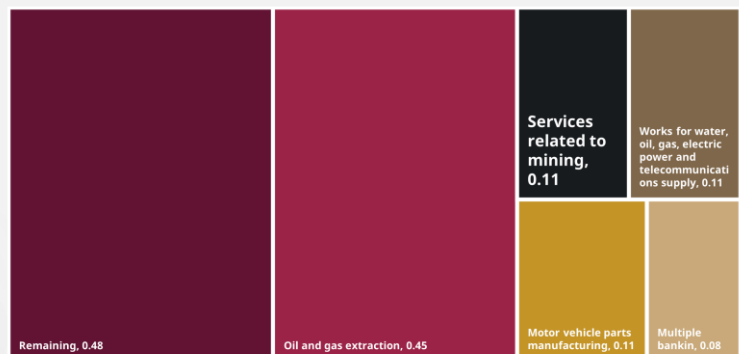
1.34
(BUSD)

Top 3 by investment origin country

- 1 U. S. A. 0.8 BUSD
- 2 Spain 0.12 BUSD
- 3 Germany 0.09 BUSD



FDI by sector (Billion dollars)



Source: SE (2025)

