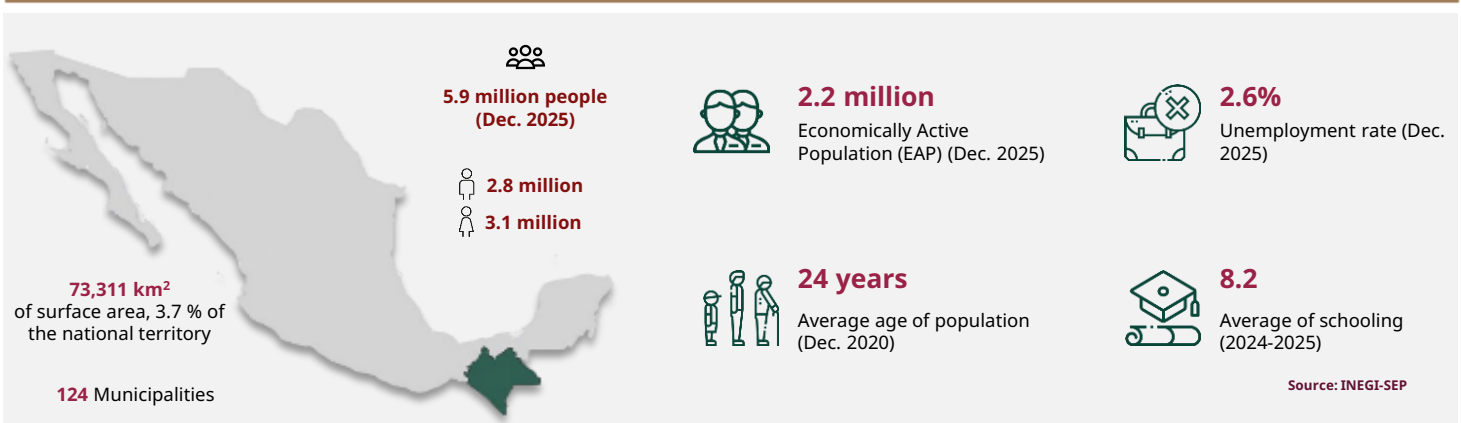




Chiapas

March 2026



INFRASTRUCTURE AND RESOURCES

4 Industrial Parks (2024)

Highways **23,343 km** in length (2022)

Railroads **568 km** in length (Mar. 2024)

Concessionaires:
Ferrocarril del Istmo de Tehuantepec, S.A. de C.V. y Tren Maya

3 International airports (2022)
Passenger capacity: **1,076,337**
Load capacity: **1,711,652 kg**

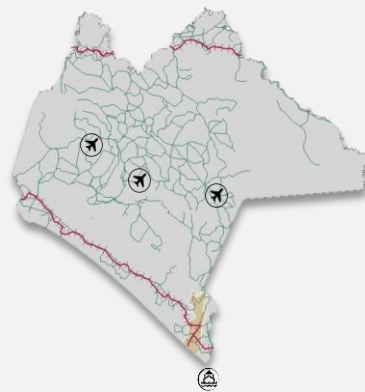
1 Port (2021)

Nearby ASIPONA (2022):
Puerto Chiapas

Gas pipeline infrastructure (2023): **Yes, Private**

Households with internet access (2020):
38.4 %

Types of customs:
Borderline



Water resources (2019):
Number of Aquifers: **15**
Availability: **High**

Distance to the 3 main customs border roads (km) (2022):

Nuevo Laredo	Ciudad Juárez
1,864.2	2,754.6
Tijuana	
3,875.5	

Source: SICT-INEGI-SEDECO

Fuente: SICT-INEGI

MEXICAN TALENT IN HIGHER EDUCATION

11,615

Graduates (2024-2025)



44

Institutions

4,688

STEM fields graduates

2,364

Engineering, manufacturing and construction

713

Information and communication technologies

614

Natural sciences, mathematics and statistics

Main institutions

with the highest number of STEM graduates



UNIVERSIDAD AUTÓNOMA DE CHIAPAS

1,246



UNIVERSIDAD DE CIENCIAS Y ARTES DE CHIAPAS

642



Universidad Politécnica de Chiapas

UNIVERSIDAD POLITÉCNICA DE CHIAPAS

609

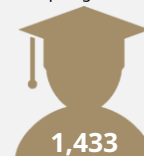
Engineering, manufacturing and construction

graduates and postgraduates:



681

Architecture and construction



1,433

Mechanical, electrical, electronic, engineering, chemical and related professions



250

Manufacturing and processes

Source: ANUIES (2024-2025 school year)





Chiapas

March 2026

MSMEs



249,156
enterprises

- Micro **240,787**
- Small **7,293**
- Medium-sized **1,076**

Source: INEGI - DENU (Mar. 2026)

POTENTIAL SECTORS



Auto parts



Renewable Energy



Forestry

Source: Data MX

FOREIGN TRADE



1,188
M USD

International purchases



1,250
M USD

International sales

Main export sectors



806
M USD

Electrical machinery, appliances and material, and parts



158
M USD

Edible fruits



108
M USD

Coffee, tea, yerba mate, and spices

Source: Mexico's Trade Balance (Dec. 2025)

MAIN INDICATORS



23

GDP position
\$ 24 B USD at market prices(2023)



\$ 4,156

USD of GDP per capita (Dec. 2023)



1.6 %

National GDP (2023)



1.6 %

Economic activity growth (2024)



12

Position by economic growth (2024)

Source: INEGI

FOREIGN DIRECT INVESTMENT

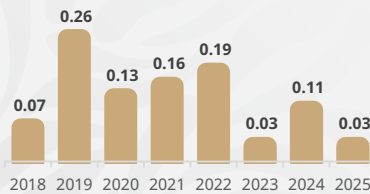
Top 3 by investment origin country

- 1 U. S. A. 0.51 BUSD
- 2 Spain 0.23 BUSD
- 3 Belgium 0.06 BUSD

Historic FDI (2018 - 2025)

0.97
(BUSD)

Billion dollars



FDI by sector (Billion dollars)



Source: SE (2025)

