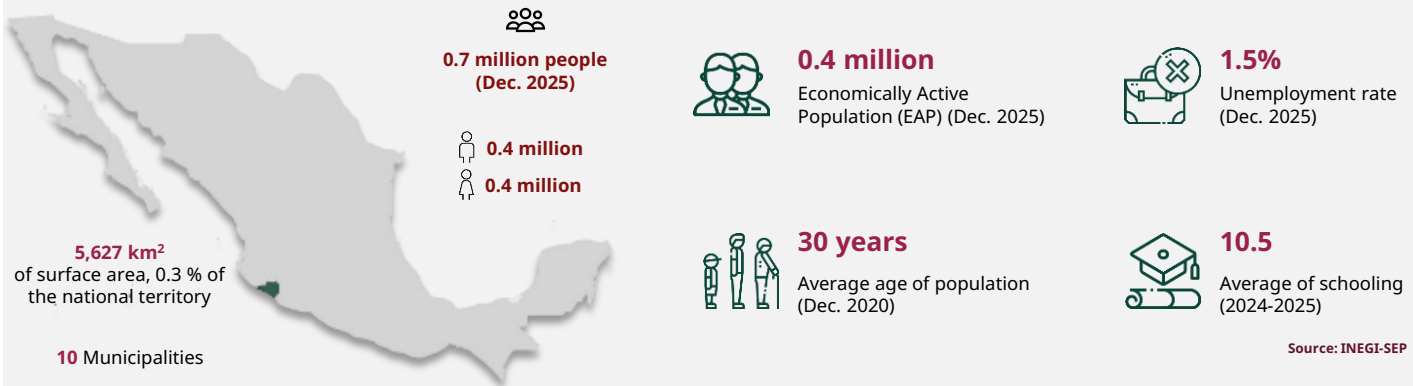


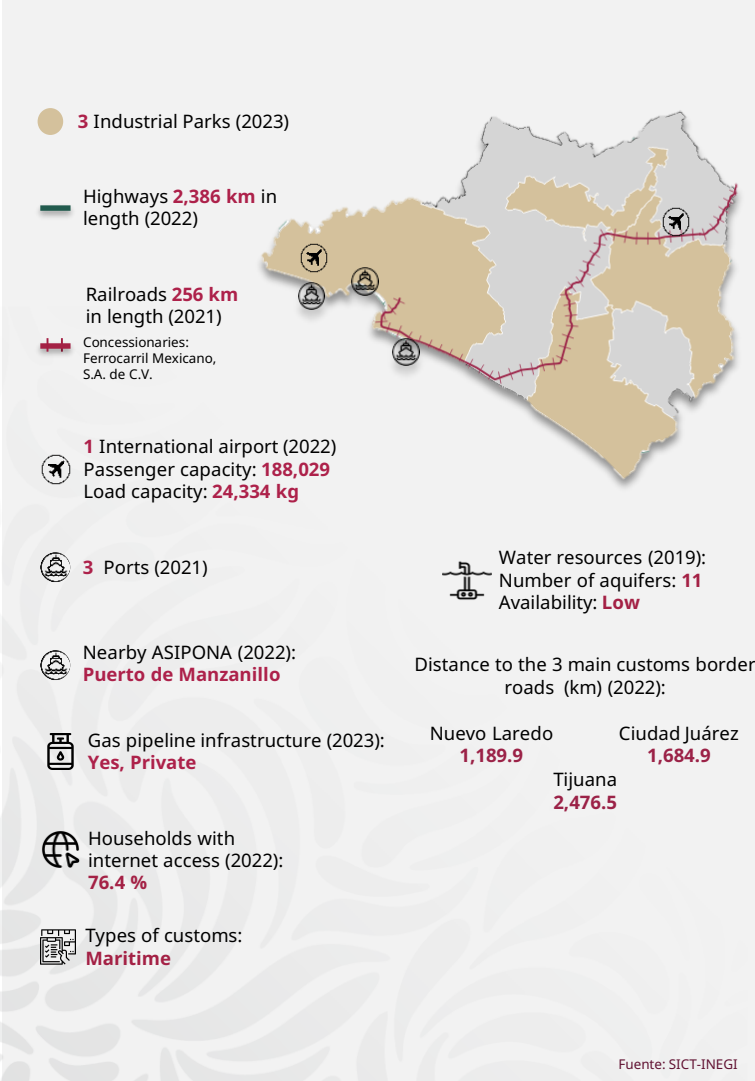


Colima

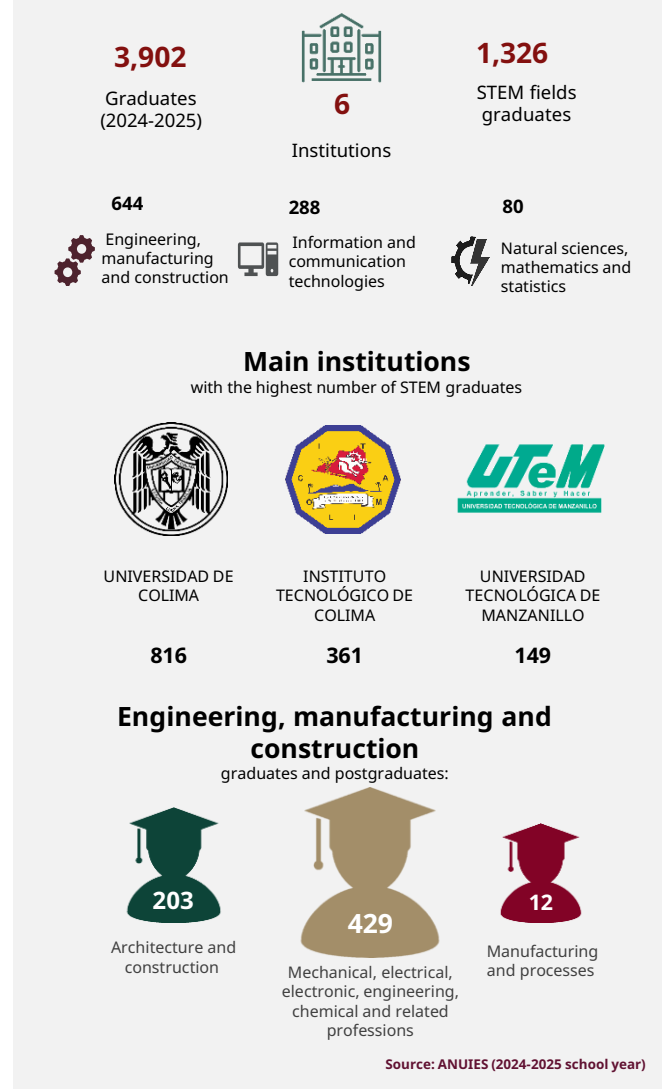
March 2026



INFRASTRUCTURE AND RESOURCES



MEXICAN TALENT IN HIGHER EDUCATION





Colima

March 2026

MSMEs

41,690
enterprises

- Micro **38,695**
- Small **2,542**
- Medium-sized **453**

Source: INEGI - DENU (Mar. 2026)

POTENTIAL SECTORS



Cultural and sporting recreation services



Business support services, waste management and remediation services



Wholesale Trade

Source: Data MX

FOREIGN TRADE



1,092
M USD

International purchases



426
M USD

International sales

Main export sectors



275
M USD

Edible fruits



50
M USD

Essential oils and resinoids



45
M USD

Vegetable, fruit or other fruit preparations

Source: Mexico's Trade Balance (Dec. 2025)

MAIN INDICATORS



31

GDP position
\$ 10 B USD at market prices(2023)



\$ 13,320

USD of GDP per capita (Dec. 2023)



0.6 %

National GDP (2023)



2.6 %

Economic activity growth (2024)



9

Position by economic growth (2024)

Source: INEGI

FOREIGN DIRECT INVESTMENT

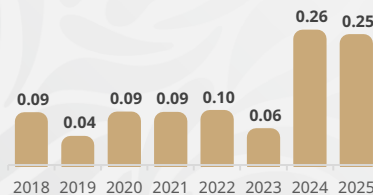
Top 3 by investment origin country

- 1 Philippines 0.4 BUSD
- 2 Canada 0.16 BUSD
- 3 U. S. A. 0.15 BUSD

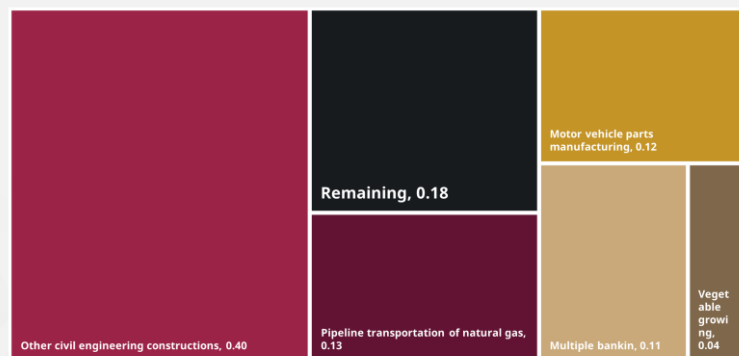
Historic FDI (2018 - 2025)

0.98
(BUSD)

Billion dollars



FDI by sector (Billion dollars)



Source: SE (2025)

