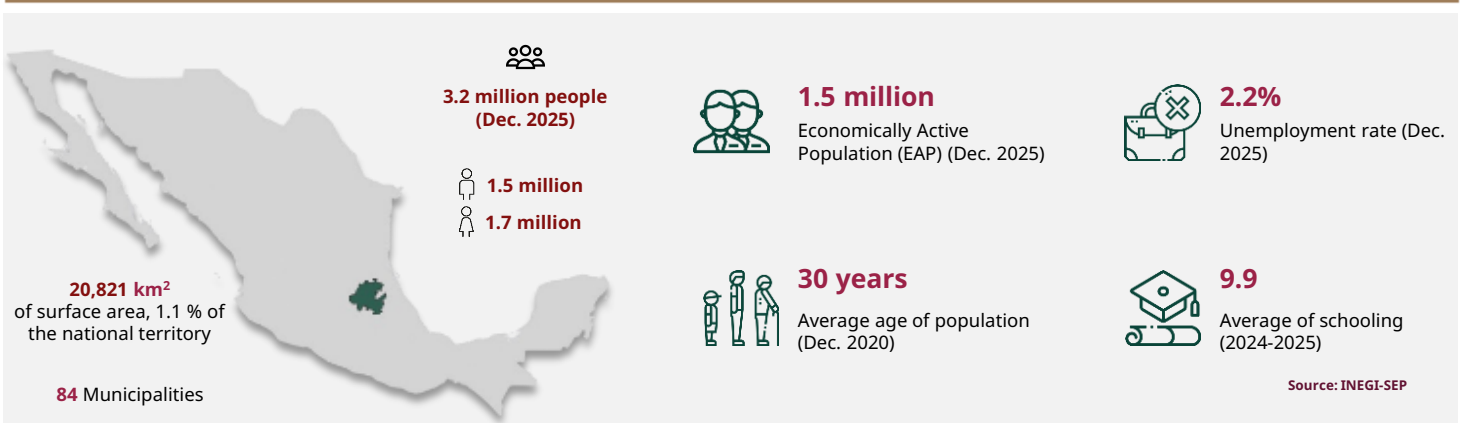


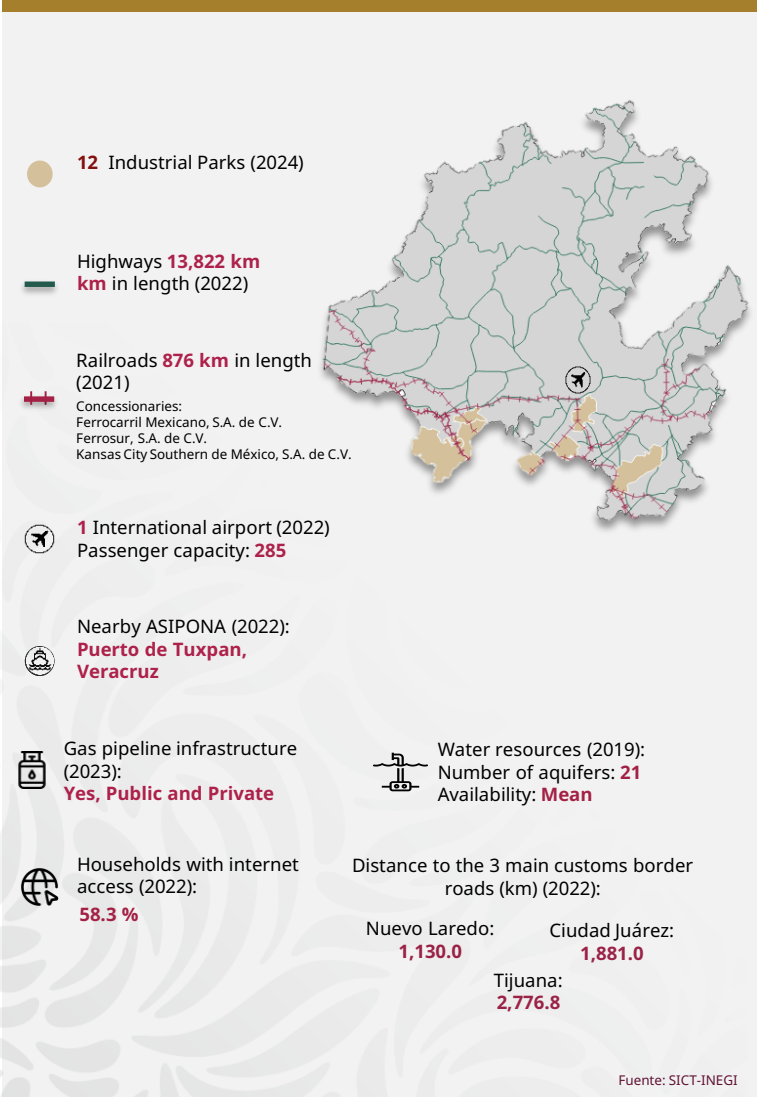


Hidalgo

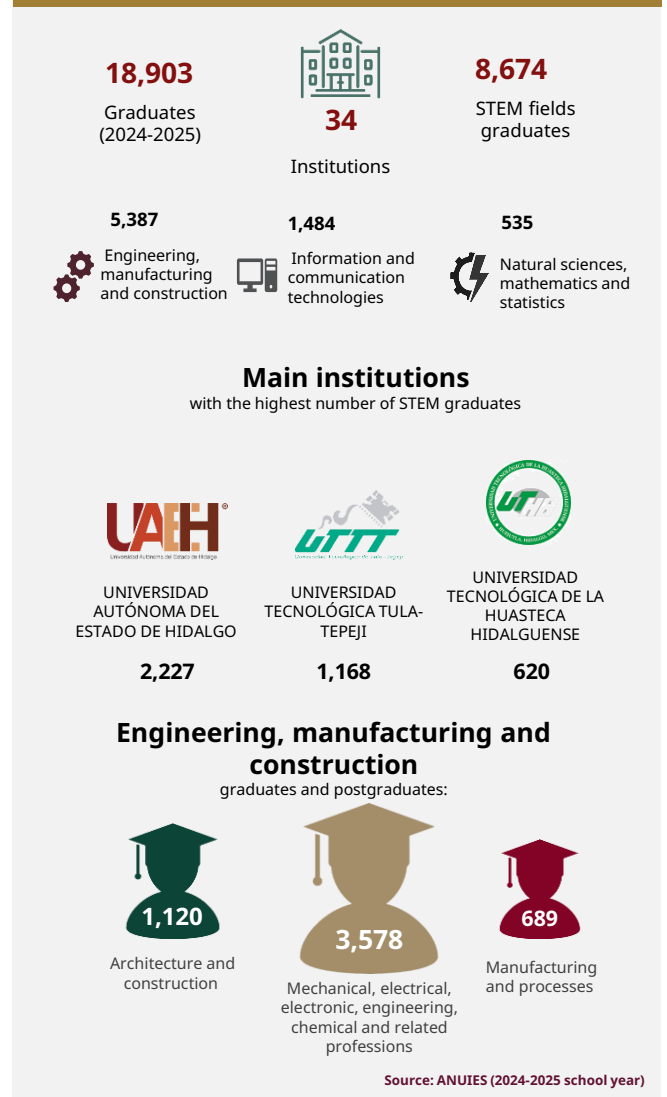
March 2026



INFRASTRUCTURE AND RESOURCES



MEXICAN TALENT IN HIGHER EDUCATION





Hidalgo

March 2026

MSMEs



159,394
enterprises

- Micro **153,245**
- Small **5,265**
- Medium-sized **884**

Source: INEGI - DENU (Mar. 2026)

POTENTIAL SECTORS



Agroindustry



Transportation,
postal services and
warehousing



Sustainable chemical
industry

Source: Data MX

FOREIGN TRADE



1,778
M USD

International purchases



1,873
M USD

International sales

Main export sectors



1,106
M USD

Railway vehicles and
material



378
M USD

Electrical machinery,
appliances and
material, and parts



84
M USD

Mechanical
machinery and
appliances, and parts

Source: Mexico's Trade Balance (Dec. 2025)

MAIN INDICATORS



20

GDP position
\$ 26 B USD at market
prices(2023)



\$ 8,120

USD of GDP per capita (Dec.
2023)



1.7 %

National GDP
(2023)



1.3 %

Economic activity growth
(2024)



13

Position by economic growth
(2024)

Source: INEGI

FOREIGN DIRECT INVESTMENT

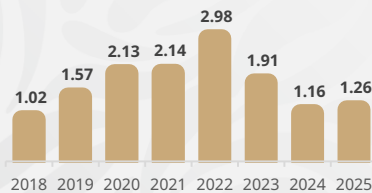
Historic FDI
(2018 - 2025)

2.18
(BUSD)

Top 3 by investment origin country

- 1 Canada 0.78 BUSD
- 2 U. S. A. 0.71 BUSD
- 3 Spain 0.37 BUSD

Billion dollars



FDI by sector (Billion dollars)



Source: SE (2025)



Gobierno de
México

Economía
Secretaría de Economía