

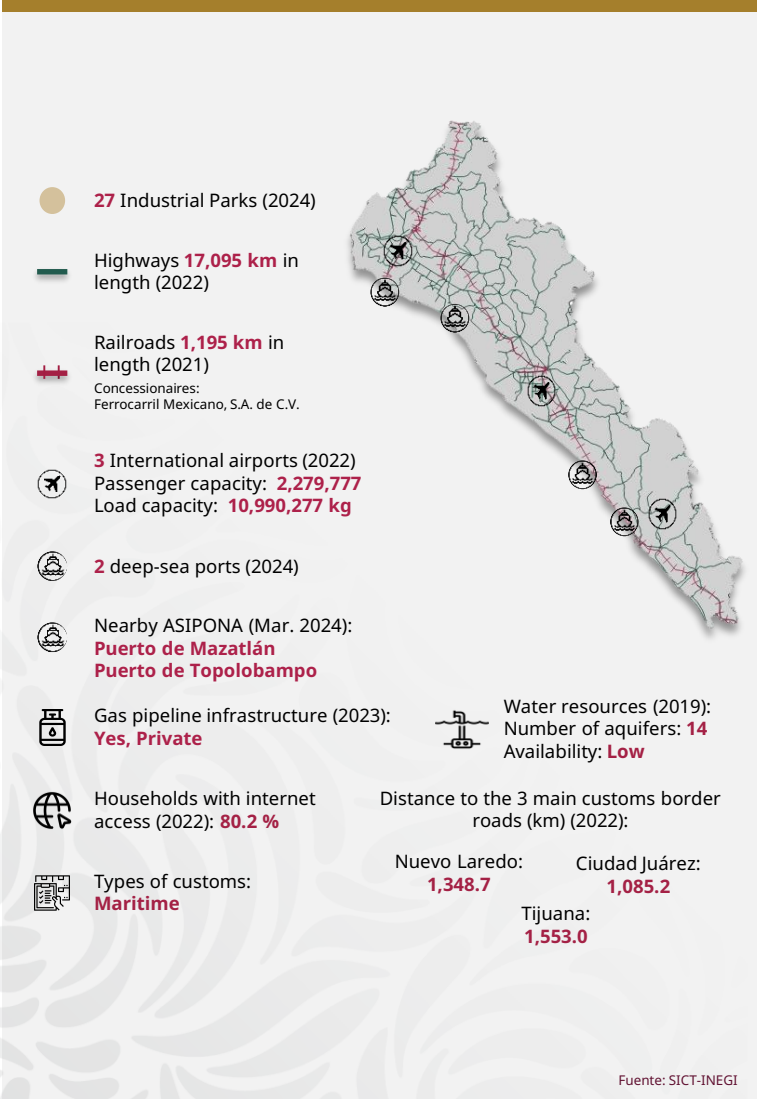


Sinaloa

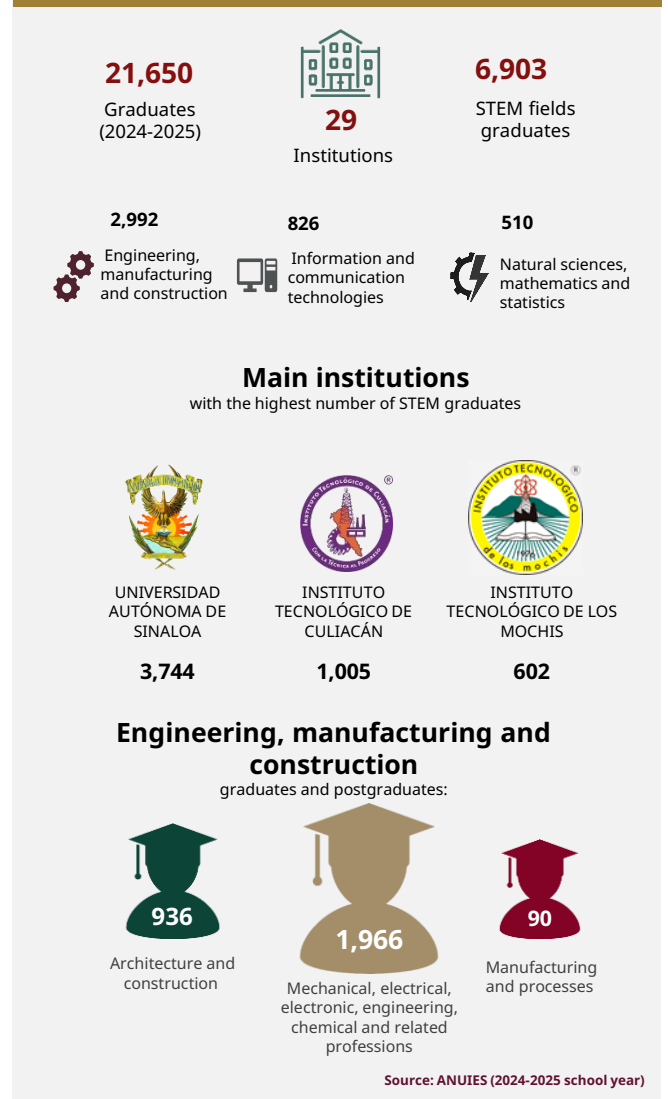
March 2026



INFRASTRUCTURE AND RESOURCES



MEXICAN TALENT IN HIGHER EDUCATION





Sinaloa

March 2026

MSMEs



136,333
enterprises

- Micro **125,542**
- Small **9,193**
- Medium-sized **1,598**

Source: INEGI - DENU (Mar. 2026)

POTENTIAL SECTORS



Temporary accommodation services and food and beverage preparation services



Business support services, waste management and remediation services



Manufacturing

Source: Data MX

FOREIGN TRADE



3,460
M USD

International purchases



4,634
M USD

International sales

Main export sectors



2,371
M USD

Vegetables, plants, roots and tubers



1,359
M USD

Edible meat and offals



317
M USD

Edible fruits

Source: Mexico's Trade Balance (Dec. 2025)

MAIN INDICATORS



17

GDP position
\$ 33 B USD at market prices(2023)



\$ 10,772

USD of GDP per capita (Dec. 2023)



2.2 %

National GDP (2023)



-3.3 %

Economic activity growth (2024)



29

Position by economic growth (2024)

Source: INEGI

FOREIGN DIRECT INVESTMENT

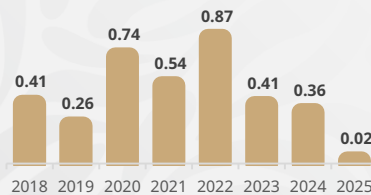
Top 3 by investment origin country

- 1 Canada 1.58 BUSD
- 2 U. S. A. 0.85 BUSD
- 3 Spain 0.72 BUSD

Historic FDI (2018 - 2025)

3.62
(BUSD)

Billion dollars



FDI by sector (Billion dollars)



Source: SE (2025)

