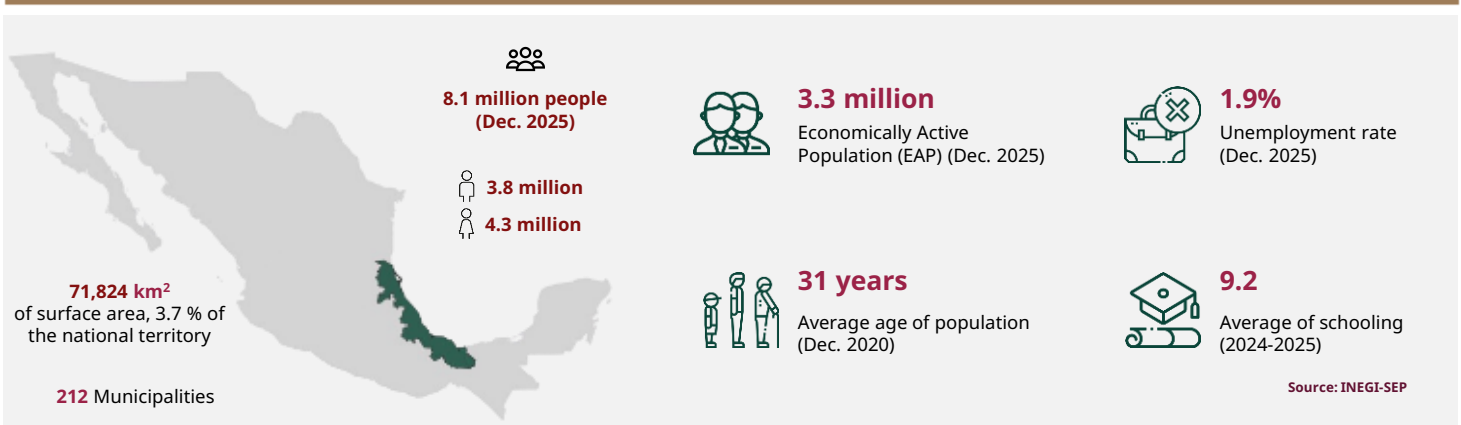


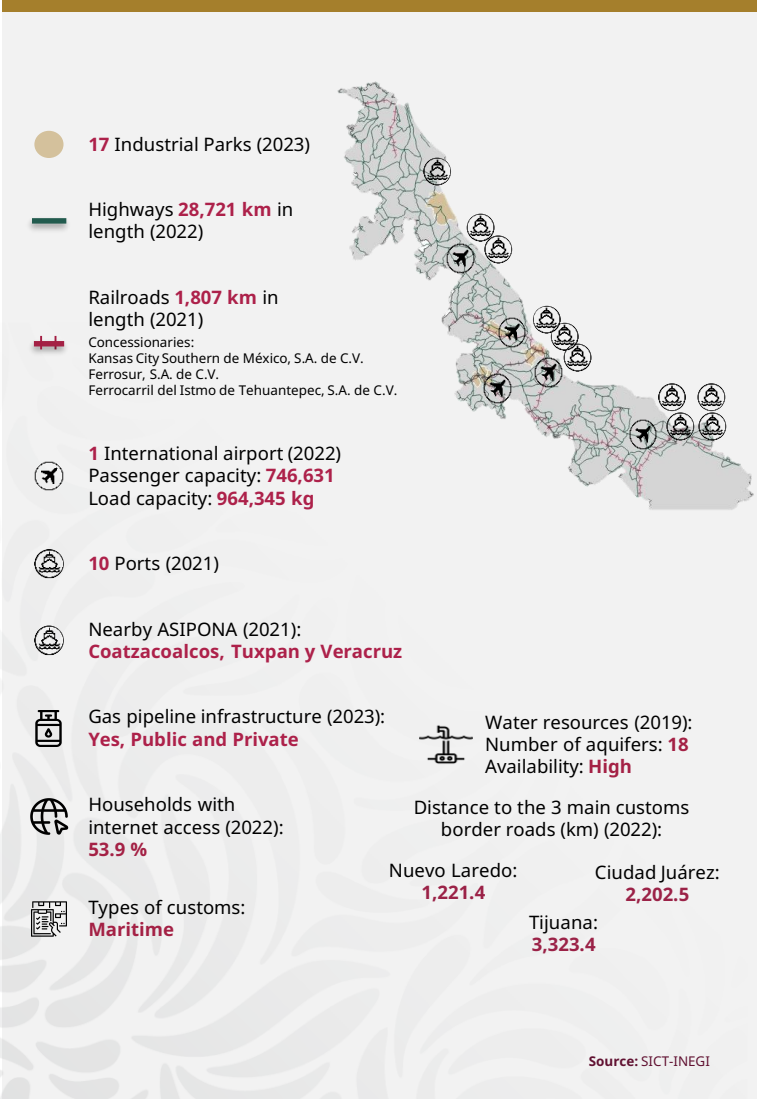


Veracruz de Ignacio de la Llave

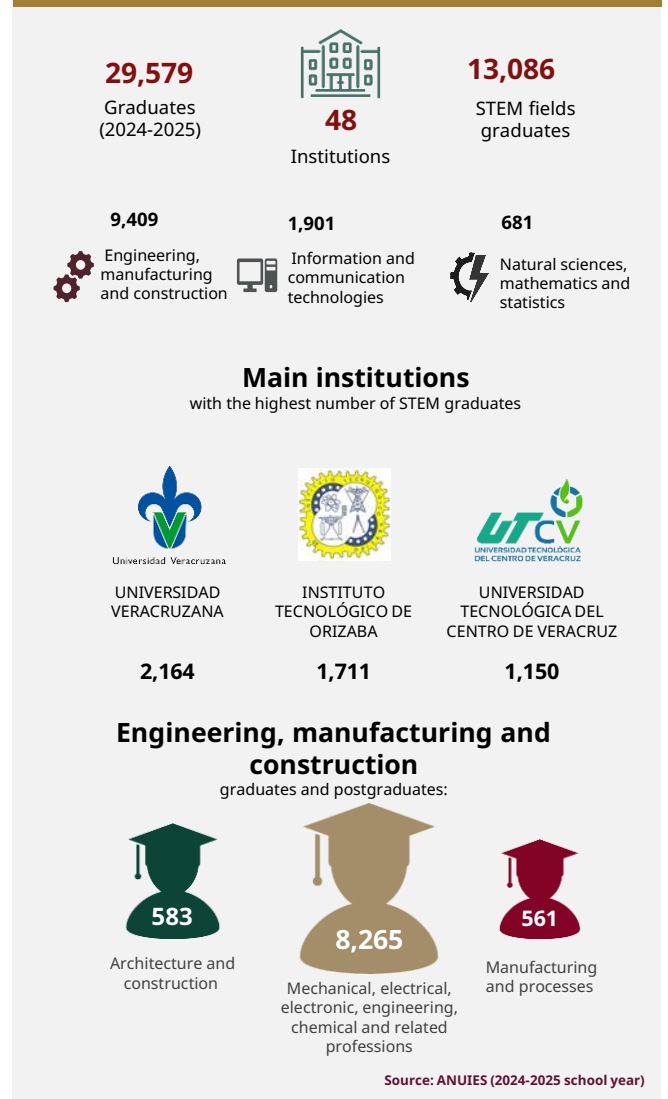
March 2026



INFRASTRUCTURE AND RESOURCES



MEXICAN TALENT IN HIGHER EDUCATION





Veracruz de Ignacio de la Llave

March 2026

MSMEs



354,329
enterprises

- Micro **338,150**
- Small **13,957**
- Medium-sized **2,222**

Source: INEGI - DENU (Mar. 2026)

POTENTIAL SECTORS



Transportation,
postal services and
warehousing



Manufacturing



Oil drilling

Source: Data MX

FOREIGN TRADE



3,945
M USD

International purchases



4,386
M USD

International sales

Main export sectors



1,517
M USD

Steel and cast iron
manufactures



610
M USD

Coffee, tea, yerba
mate, and spices



340
M USD

Edible fruits

Source: Mexico's Trade Balance (Dec. 2025)

MAIN INDICATORS



6

GDP position
\$ 65 B USD at market
prices(2023)



\$ 8,028

USD of GDP per capita (Dec.
2023)



4.3 %

National GDP
(2023)



1.3 %

Economic activity growth
(2024)



15

Position by economic growth
(2024)

Source: INEGI

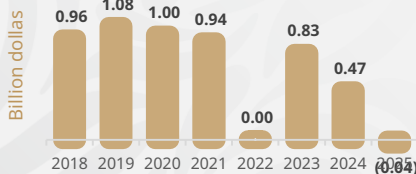
FOREIGN DIRECT INVESTMENT

Top 3 by investment origin country

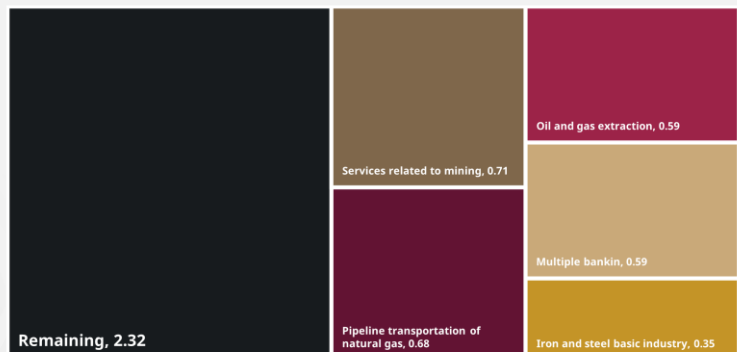
- 1 U. S. A. 1.25 BUSD
- 2 Canada 0.9 BUSD
- 3 Spain 0.73 BUSD

Historic FDI
(2018 - 2025)

5.23
(BUSD)



FDI by sector (Billion dollars)



Source: SE (2025)

