

www.investhidalgo.mx

STATE OF

HIDALGO



ECONOMÍA
SECRETARÍA DE DESARROLLO
ECONÓMICO

STRATEGIC LOCATION

Immediate access to the Metropolitan Zone of the Valley of Mexico (ZMVM), economic center, financial, political and cultural of the country.



- The Metropolitan Zone of the Valley of Mexico has a population of over 22 million people, making it the third-largest metropolitan area in the OECD and the largest in the world outside of Asia.
- 1 out of every 5 Mexicans lives in this area, according to the United Nations.

DEMOGRAPHIC PROFILE IN HIDALGO

Hidalgo has a young and active population, with a strong economy and a low unemployment rate.

3.2 million

Total population

30 years

Average age

1.5 million

Economically active
population

48.1%

Men

2.2%

Unemployment rate
(2022 vs. 3.0% national)

51.9%

Women



LEGAL CERTAINTY FOR INVESTMENTS

Hidalgo is experiencing a unique moment in its history, a result of the political alternation in the state, which has set up the foundations to reach Hidalgo's maximum potential.



- The new state administration (2022-2028) has wide experience in consolidating large investment projects and the capacity to provide legal certainty to new investments.
- An extraordinary relationship and collaboration with the federal government, municipalities and the business sector.
- Among the 7 most attractive states to invest (COPARMEX).
- Among the top 10 states with the highest level of security and social peace in the country (Mexico Peace Index 2024).

GROWING ECONOMIC ACTIVITY

The economic-related public policies generated and consolidated in Hidalgo today, benefit the attraction of new investment projects and the trust of investors.

Exports



Jan - Sep 2023

2nd.

National place
Due to the significant growth in exports during the first 9 months of the year, with a year-on-year increase of **24.5%**. (INEGI).

Industrial activity



August 2023

2nd.

National place
Due to the higher increase in industrial activity with an annual rate of **16.8%**. (INEGI).

Formal employment



Jan - Dec 2023

4th.

National place
For the highest growth in formal employment in 2023, an increase of 5.0% annually, 1.6 times higher than the country's increase of **3.0%**. (IMSS).

Economic activity



Jan-Sep 2023

5th.

National place
For the highest rebound in economic activity, with an annual growth rate of **5.2%**. (INEGI).

HISTORICAL ACHIEVEMENTS IN INVESTMENT ATTRACTION



66
Projects

\$67,329/3.1 USD
Million pesos/Billion USD

97,037
Direct & indirect employments

Strategic sectors

Logistics, clean energy, mining, sustainable mobility, recycling, pharmaceuticals, tourism, railway, textile, food, construction, services.



CAPACITY TO DRIVE DEVELOPMENT



A nodal point and logistical potential in the center of Mexico, key to access to ports, airports, and other industrial hubs in the country.

Proximity to the country's most modern airport infrastructure, the **Felipe Ángeles International Airport (AIFA)**: an opportunity for economic growth and industrial logistical development.

Territorial potential of over 14,000 hectares, promising for the planning and development of large-scale projects in the Valle de Plata area.

Specialized human talent, with the largest network of polytechnic and technological universities in the country (per capita).

Hidalgo has successfully optimized cargo interconnectivity with **major access routes to urban centers** and transportation systems.

Industrial reserves in strategic locations throughout the state, close to key trade routes, ideal for attracting new foreign investments.

Hidalgo Intermodal Logistics Terminal (TILH)

- Intermodal transportation and storage services in Atotonilco de Tula.
- Connection of Kansas City Southern de Mexico and Ferromex.
- Alliance between Grupo UNNE and Hutchison Port Holdings from Hong Kong.



HIGHWAY CONNECTIVITY

The highway infrastructure is strategic for getting access to the main ports and borders in the country, which allows a greater dynamism in the regional economy.



THE LOGISTICS AND INDUSTRIAL HUB OF CENTRAL MEXICO

Airports

-  Felipe Ángeles International Airport
-  Mexico City International Airport

Railways



Logistics terminals

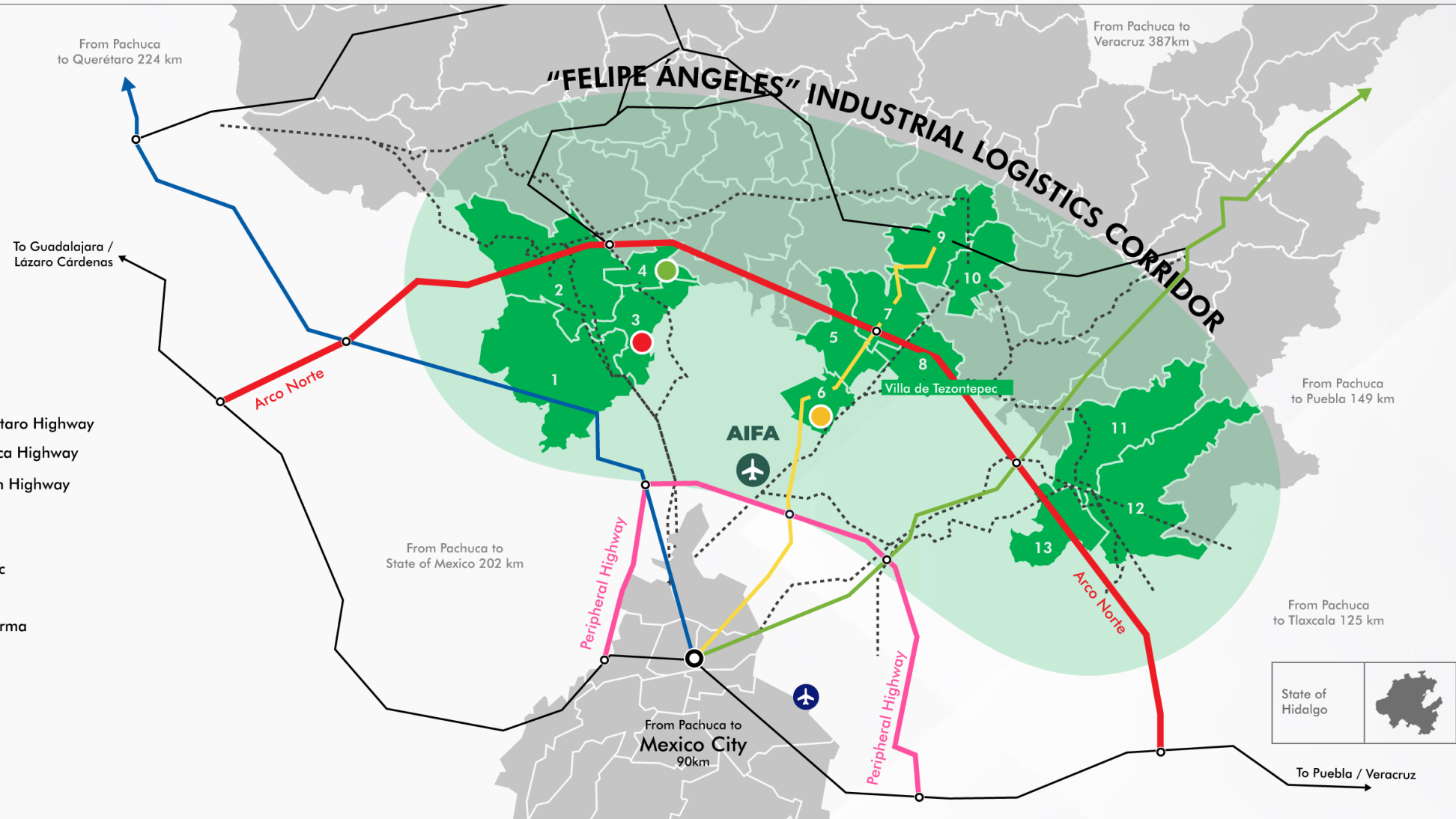
-  TILH
-  BULKMATIC
-  DISELO FR TERMINALS

Roads

-  Highways
-  Arco Norte Highway
-  Peripheral Highway
-  Mexico - Querétaro Highway
-  Mexico - Pachuca Highway
-  Mexico - Tuxpan Highway

13 Municipalities

- | | |
|--|--|
|  1 Tepeji del Río |  8 Villa de Tezontepec |
|  2 Tula de Allende |  9 Pachuca |
|  3 Atotonilco de Tula |  10 Mineral de la Reforma |
|  4 Atitalaquia |  11 Tepeapulco |
|  5 Tolcayuca |  12 Apan |
|  6 Tizayuca |  13 Emiliano Zapata |
|  7 Zapotlán | |



CONSOLIDATED SECTORS

In Hidalgo there are global companies that contribute to the construction of important value chains.



Railway



Mining & Construction materials



Freight & Passenger transportation



Textile & Apparel



PRIORITY DEVELOPMENT SECTORS

Incentivizing the arrival of new investments will boost strategic sectors that contribute to the construction of value chains.



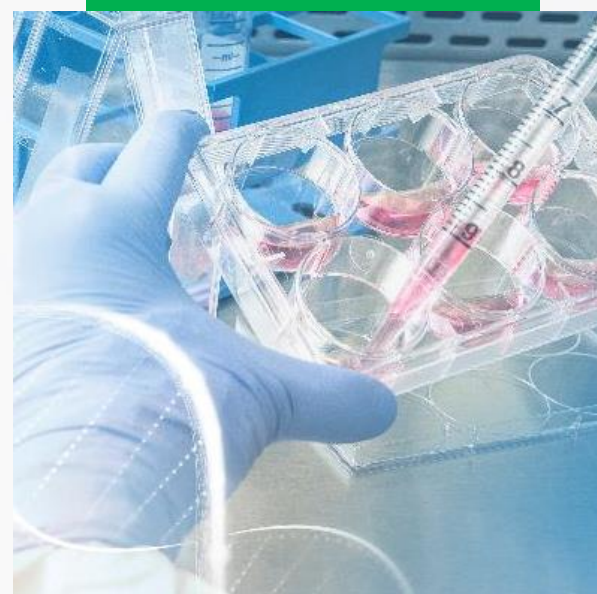
Electro mobility



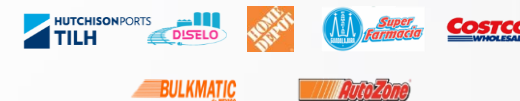
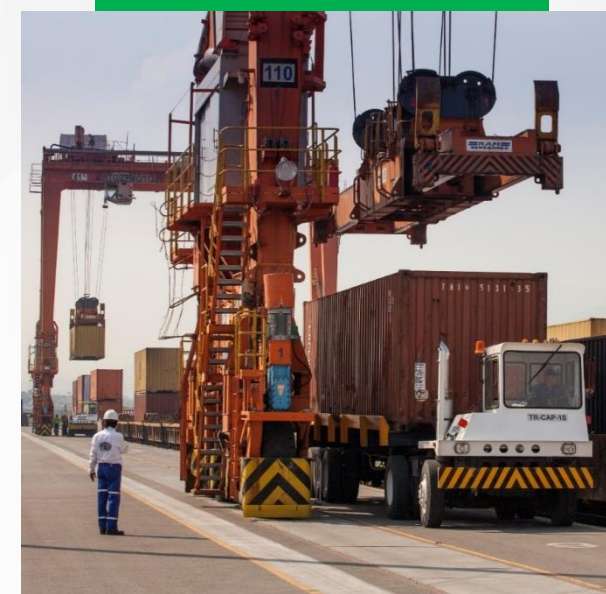
Clean energies



Pharmaceutical

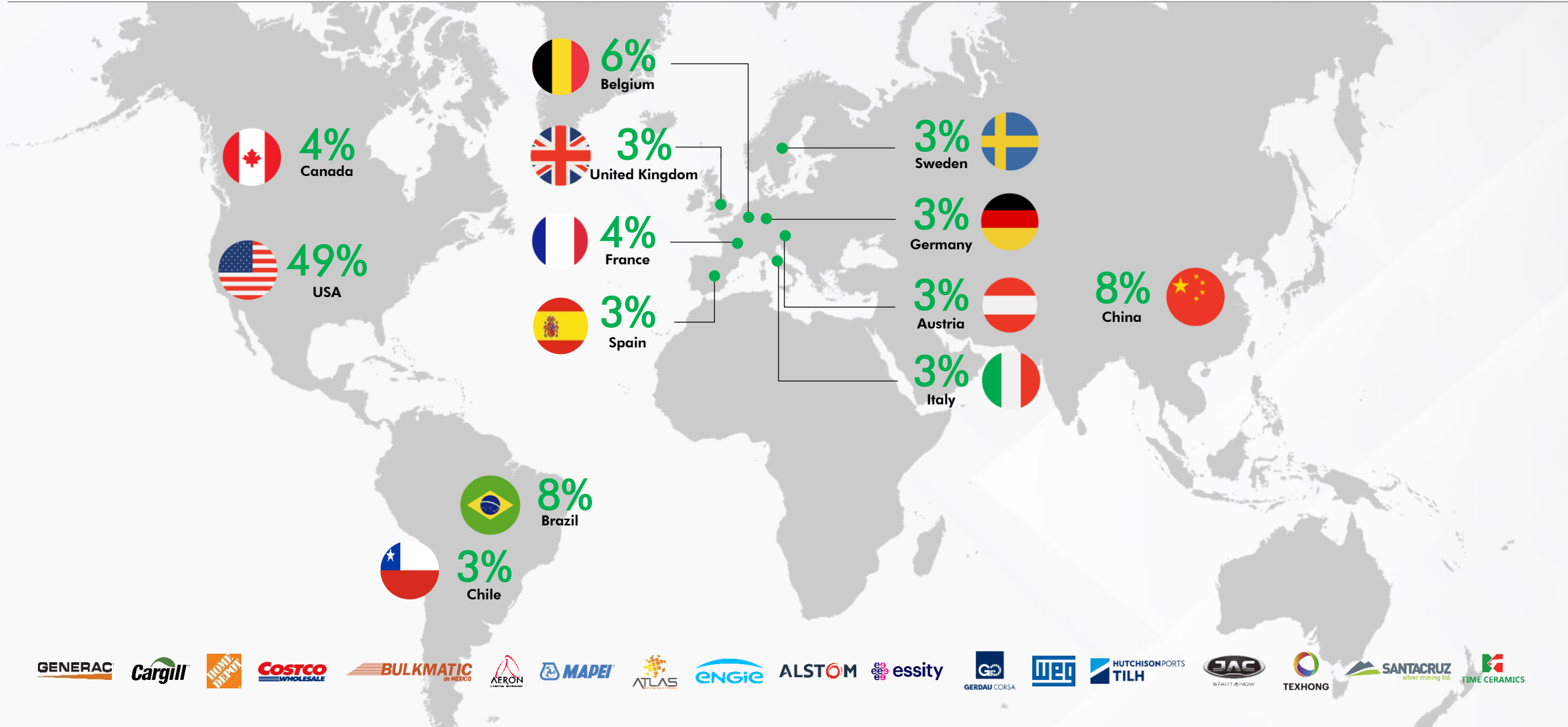


Logistics



FOREIGN INVESTMENT DIVERSIFICATION

The state has become an important destination for foreign investments across a variety of industrial sectors.



HUMAN TALENT

Hidalgo possesses the most important asset to boost the economy: human talent.



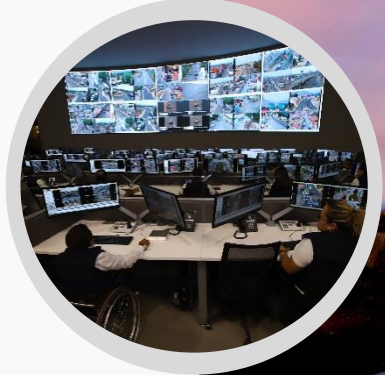
- It has the **largest network of polytechnic and technological universities** in the country (per capita).
- It **ranks third** in number of graduated engineers and technicians per capita, from technological institutions.
- Over **6,000 technicians** are trained each year, who graduate from careers related to current and future industrial activities.
- Employment promotion programs are promoted to support recent graduates to enter the labor market: **“Transformando con la Juventud”** (Transforming with Youth initiative).

TECHNOLOGICAL VANGUARD IN SECURITY

Hidalgo among the 10 safest states in the country.



C5i Control, Command,
Communications, Computing,
Coordination and Intelligence Center



Business security through direct connection to company video surveillance cameras with the C5i.

5k

surveillance cameras

38 road arches

for license and plate registration

1,255

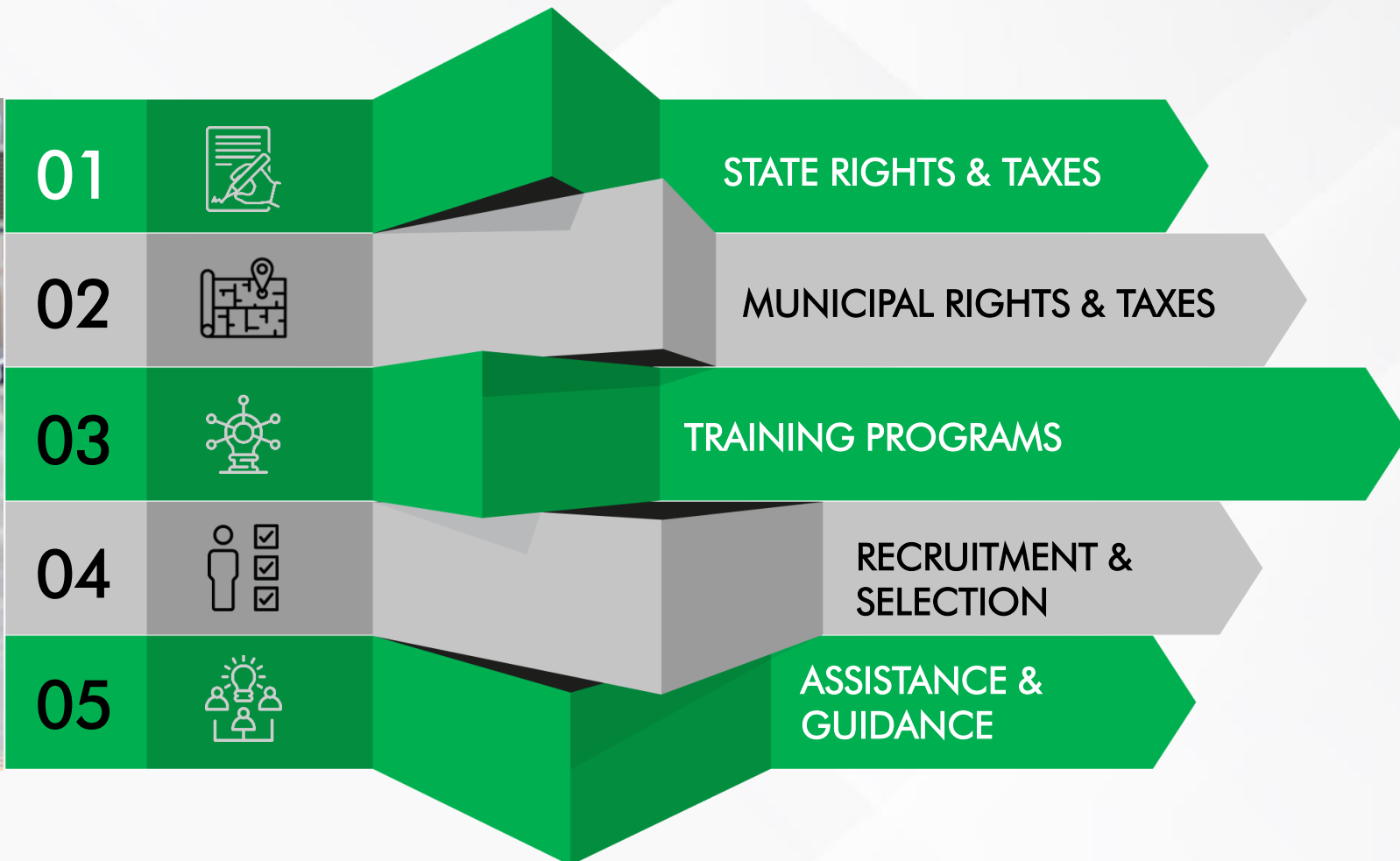
warning buttons

30k

neighborhood alarm systems

INCENTIVES

The Advisory Council for Analysis and Incentives for Investment Competitiveness evaluates and determines the supports and incentives eligible to be granted to investment projects, which may include:



Contact:

Secretariat of Economic Development



+52 (771) 688-6026 Ext. 120

carloshenkel@hidalgo.gob.mx / inversiones@hidalgo.gob.mx



ECONOMÍA
SECRETARÍA DE DESARROLLO
ECONÓMICO

www.investhidalgo.mx
