



CIUDAD DE MÉXICO  
CAPITAL DE LA TRANSFORMACIÓN

SECRETARÍA DE  
DESARROLLO ECONÓMICO

**in**CDMX  
INVESTMENT AGENCY OF MEXICO CITY

# MEXICO CITY'S INVESTMENT OPPORTUNITIES



# MEXICO CITY METRO AREA

A GLOBAL CITY

**+22 MILLION  
INHABITANTS  
METRO AREA**

**MAIN SECTOR:  
% SERVICES**

**6.081 BILLION PESOS (2023)  
20% OF NATIONAL GDP  
0.4% OF THE TERRITORY**

**+6.1 MILLION  
EMPLOYED  
PEOPLE**

**#1 COMPETITIVENESS  
IN MEXICO (IMCO, 2025)**

**IF THE MEXICO CITY METRO AREA WERE A  
COUNTRY, IT WOULD BE THE 5TH LARGEST  
ECONOMY IN LATIN AMERICA**

# CENTER



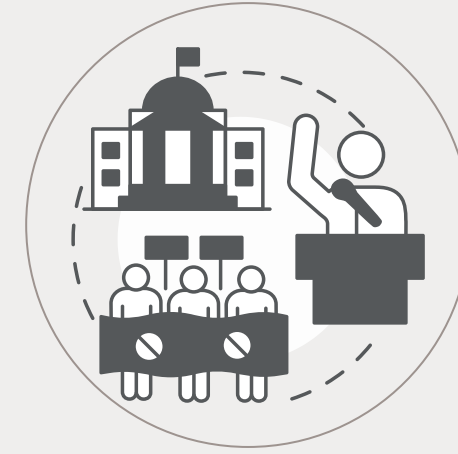
## ECONOMIC

**15% GDP**  
of the country



## SOCIAL DEVELOPMENT

**+900K people out of poverty** (2018-2024)



## FINANCIAL

**10,226**  
sector's economic units



## TECHNOLOGICAL

**1st place nationally**  
in the State Digital  
Development Index



## INNOVATIVE

**50% of the country's startups**



## MEDICAL

**12 National Institutes of Health**



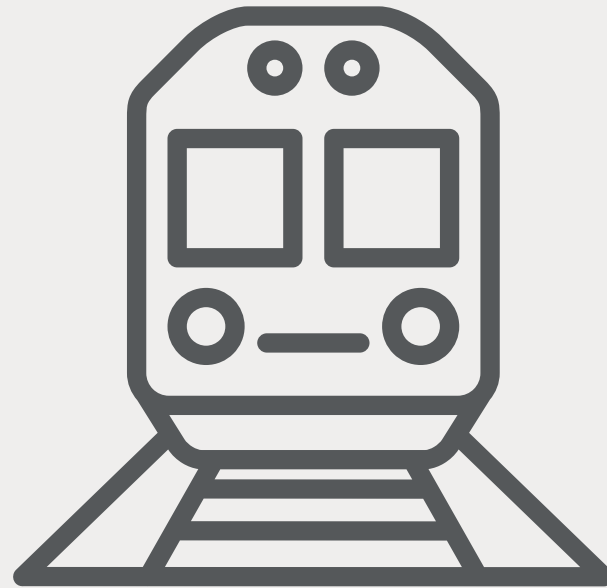
## COMMERCIAL

**Top 3 global GBS locations**



## SUSTAINABLE

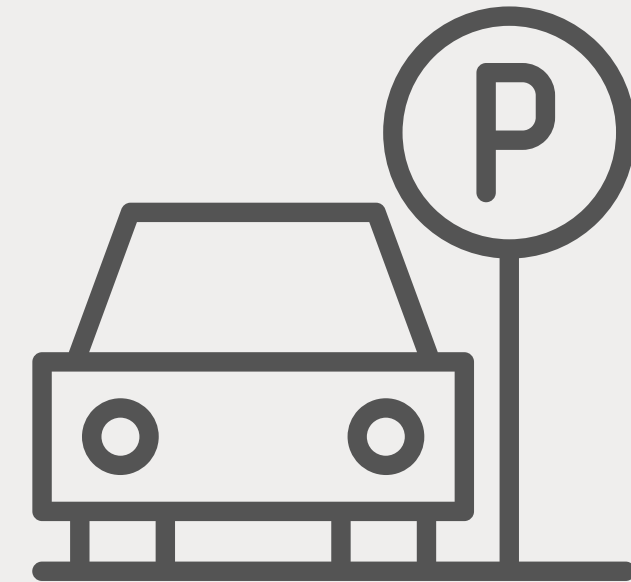
**+500 electric public transport units**



Revival of Mexico's passenger train:  
**Buenvista and Pantaco**



**3 airports**  
in the region



Origin and destination of all major  
highways in the country

# MOBILITY & LOGISTICS

# SOUND PUBLIC FINANCES



**1st place**  
in tax collection

**28%** of Mexico City's  
income



**local tax  
collection  
increased**

First half of 2025  
VS first half of 2024

**Compared with 6.9%**  
**average in the other**  
**31 states** s/CDMX



## HIGHEST COMPETITIVENESS

**1st place nationally**  
**State Competitiveness Index**  
for the 6th consecutive year



## INNOVATION AND ECONOMY

**4.71 patents** per every  
**100 thousand**

economically active people



## INFRASTRUCTURE

**Highest usage**  
**of mobile banking**

**30,167 contracts**  
per every 10 thousand adults



## SOCIETY AND ENVIRONMENT

**45%** Biggest population with higher education



Highest density of specialized doctors in the country

2.5 per every thousand inhabitants



**The best health services**

The highest number of hospital beds per inhabitant.

**70%** voter turnout from the registered list

The most active population in their city's decisions.

**44%** of the City's total income is self-generated revenue

**The lowest average cost of debt in the country**

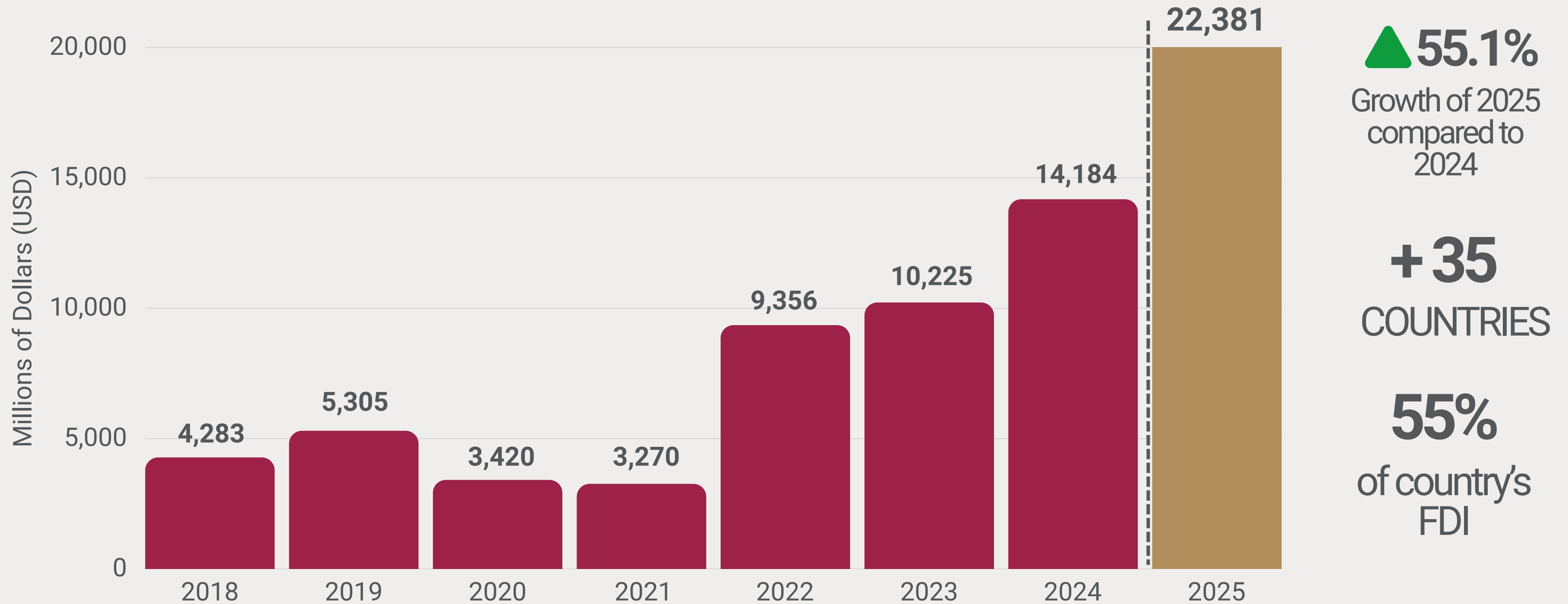
(8.82 weighted average interest rate)



## POLITICAL SYSTEM AND GOVERNMENT

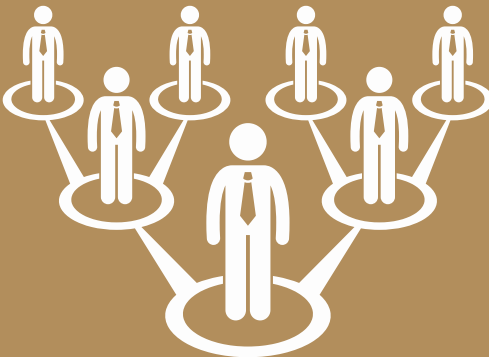
# FOREIGN DIRECT INVESTMENT (FDI)

FOREIGN DIRECT INVESTMENT (FDI) IN MEXICO CITY IN 2025 IN MILLIONS OF DOLLARS: **A NEW RECORD**



# inCDMX

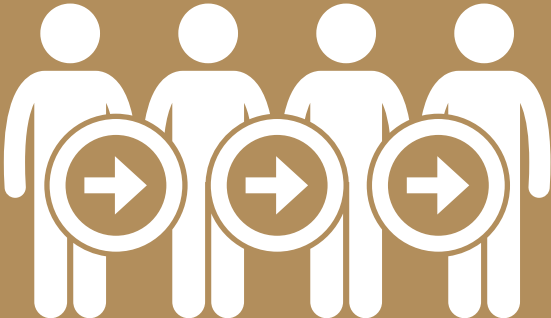
INVESTMENT AGENCY OF MEXICO CITY



We connect with **local and federal government** to support processes



We provide **guidance** on fiscal incentives and available support.



We accompany the **installation, expansion, and consolidation** of operations in Mexico City.



We bridge funding, academia & suppliers

# STRATEGIC SECTORS



**HEALTH TECH AND  
MEDICAL  
TECHNOLOGY**

**11,642**  
students

Life Sciences graduate  
annually



**CIRCULAR  
ECONOMY**

**47,646**  
students

Industrial Engineering,  
Chemical Process  
Engineering, Electricity  
and Energy Generation



**SPECIALIZED  
PROFESSIONAL  
SERVICES**

**205,492**  
students

Law, Accounting and  
Auditing, Actuarial  
Science and Mathematics  
Finance, Banking, and  
Insurance



**CREATIVE  
INDUSTRIES**

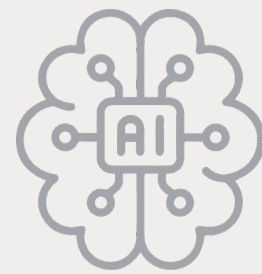
**27,398**  
students

Graphic and Editorial  
Design and Communication,  
Audiovisual Technologies  
for Media

## COMPETITIVE ADVANTAGES IN TECH

**1st place nationally** in startup ecosystems

**+553** Startups in CDMX  
(2025)



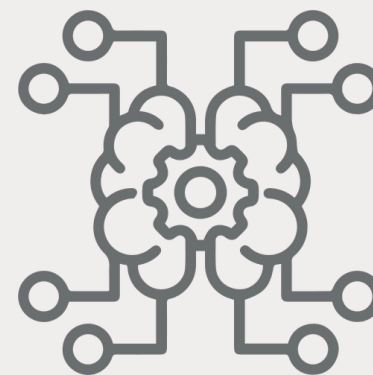
**53%** AI companies are  
located in CDMX  
(2024)

**10/11** Mexican unicorns  
located in CDMX

## MAIN SPECIALTIES



**Business analytics**



**Machine Learning**



**Robotic Process  
Automation (RPA)**

# HOW TO COINVEST?

TAX INCENTIVES

## Mexico City (January 2025)



New enterprises

25%  
payroll tax



High Tech

55% payroll tax  
80% REA tax  
30% property tax



Recruitment of R&D personnel

60% payroll tax  
(SECTEI)



33% Increase in workforce

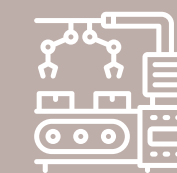
25%  
payroll tax

## Mexico Plan Decree (January 2025)



Fixed assets investments

91% in  
income tax



Investments in R&D equipment

89% in  
income tax



Training and Innovation:

25% in  
income tax



Tax credit of 30% of expenses and investments made in technological R&D projects, applicable against income tax for the fiscal year (SECIHTI)

# INVESTMENT DIVERSITY

FDI



## Tata Consultancy Services

5,000 direct jobs in software solutions



## Boehringer Ingelheim

3.5 billion pesos in facilities and research



## Clivi

First investment by the Japanese government in a Mexican startup



## SOMAR Group

23 million pesos in clinical research



## ITRASIG

Genomic and Clinical Innovation Unit



## FedEx

Investment in 72 new electric units

ECONOMY

TECHNOLOGY

CAPITAL OF

TRANSFORMATION

INNOVATION

CULTURE

# WWW.SEDECO.CDMX.GOB.MX



INCDMX@SEDECO.CDMX.GOB.MX



55 5682 2096 EXTS. 301 Y 402



@SEDECOCDMX

## CONTACT OUR TEAM



## DIGITAL PRESENTATION



**inCDMX**  
INVESTMENT AGENCY OF MEXICO CITY